

“ Sheel, Sharir, Adhyayan ”
Aundh Shikshan Mandal, Aundh



**Raja Shripatrao
Bhagawantrao
Mahavidyalaya, Aundh.
(Satara)**

**Feedback Report
2016-2017**

TABLE OF CONTENTS

STUDENTS FEEDBACK ANALYSIS REPORT	4
ANALYSIS OF FEEDBACK RECEIVED FROM STUDENTS	4
SUGGESTIONS	5
GRAPHICAL PRESENTATION FEEDBACK RECEIVED FROM STUDENTS	6
STUDENTS PROGRAMME FEEDBACK	7
ALUMNI FEEDBACK ANALYSIS REPORT	8
ANALYSIS OF FEEDBACK RECEIVED FROM ALUMNI	8
GRAPHICAL PRESENTATION FEEDBACK RECEIVED FROM ALUMNI'S:	9
TEACHERS FEEDBACK ANALYSIS REPORT	10
ANALYSIS OF FEEDBACK RECEIVED FROM TEACHERS	10
GRAPHICAL PRESENTATION OF TEACHER'S FEEDBACK	11
INTERPRETATION OF ANALYSIS	12
SUGGESTIONS	12
PARENTS FEEDBACK ANALYSIS REPORT	15
ANALYSIS OF FEEDBACK RECEIVED FROM PARENTS	15
SUGGESTIONS	16
GRAPHICAL PRESENTATION OF PARENTS FEEDBACK ON CURRICULUM	17
ACTION TAKEN REPORT ON FEEDBACK	18
Chart 1 Students Feedback.....	6
Chart 2 Alumni Feedback	9
Chart 3 Teachers Feedback	11
Chart 4 Teachers Feedback About Adequacy of Syllabus.....	13
Chart 5 Teachers Feedback About Learning Values of Syllabus	13
Chart 6 Teachers Feedback About Applicability of Syllabus	14
Chart 7 Teachers Feedback About Employability of Programme.....	14
Chart 8 Parents Feedback.....	17

Table 1 Students Feedback.....	5
Table 2 Students Programme Feedback About Syllabus of each course	7
Table 3 Students Programme Feedback About Background for benefitting from course	7
Table 4 Students Programme Feedback About course toughness.....	7
Table 5 Alumni Feedback	9
Table 6 Teachers Feedback	11
Table 7 Teachers Feedback Summary.....	12
Table 8 Parents Feedback.....	16

STUDENTS FEEDBACK ANALYSIS REPORT

We have taken the feedback from students on design and review of syllabus. The details of feedback are as follow

ANALYSIS OF FEEDBACK RECEIVED FROM STUDENTS

	Count					Sum	Percentage				
	5	4	3	2	1		5	4	3	2	1
Usefulness of syllabus in the employment & Entrepreneurship	23	36	18	0	0	77	30%	47%	23%	0%	0%
Role of syllabus in the personality development	25	38	12	1	1	77	32%	49%	16%	1%	1%
Use of syllabus in global competency and ICT	26	28	20	2	1	77	34%	36%	26%	3%	1%
Use of syllabus for admission in PG course and its use while learning P.G. course	31	26	15	3	2	77	40%	34%	19%	4%	3%
Does the syllabus add values to nationality	19	34	19	3	2	77	25%	44%	25%	4%	3%
Does the syllabus add values to Social responsibility?	31	24	13	7	2	77	40%	31%	17%	9%	3%
Does the syllabus add values to Environment awareness?	20	33	16	6	2	77	26%	43%	21%	8%	3%
Does the syllabus add values to Eradication of superstition?	23	33	18	2	1	77	30%	43%	23%	3%	1%
Does the syllabus add values to Social Justice?	31	24	13	7	2	77	40%	31%	17%	9%	3%
Usefulness of syllabus in the skill development & development of research attitude among the student	28	32	13	2	2	77	36%	42%	17%	3%	3%
Learning value (in terms of skills, concepts, knowledge, analytical abilities, or broadening perspectives)	22	37	12	4	2	77	29%	48%	16%	5%	3%

Applicability/relevance to real life situations	16	38	19	1	3	77	21%	49%	25%	1%	4%
Depth of the course content	20	39	14	2	2	77	26%	51%	18%	3%	3%
Extent of coverage of course	27	37	7	2	4	77	35%	48%	9%	3%	5%
Extent of effort required by students	22	34	16	2	3	77	29%	44%	21%	3%	4%
Relevance/learning value of project/report	33	28	13	1	2	77	43%	36%	17%	1%	3%
Overall rating of Syllabus	40	24	10	1	2	77	52%	31%	13%	1%	3%

TABLE 1 STUDENTS FEEDBACK

SUGGESTIONS

1. Good & best Syllabus

GRAPHICAL PRESENTATION FEEDBACK RECEIVED FROM STUDENTS

Students Syllabus Feedback Analysis

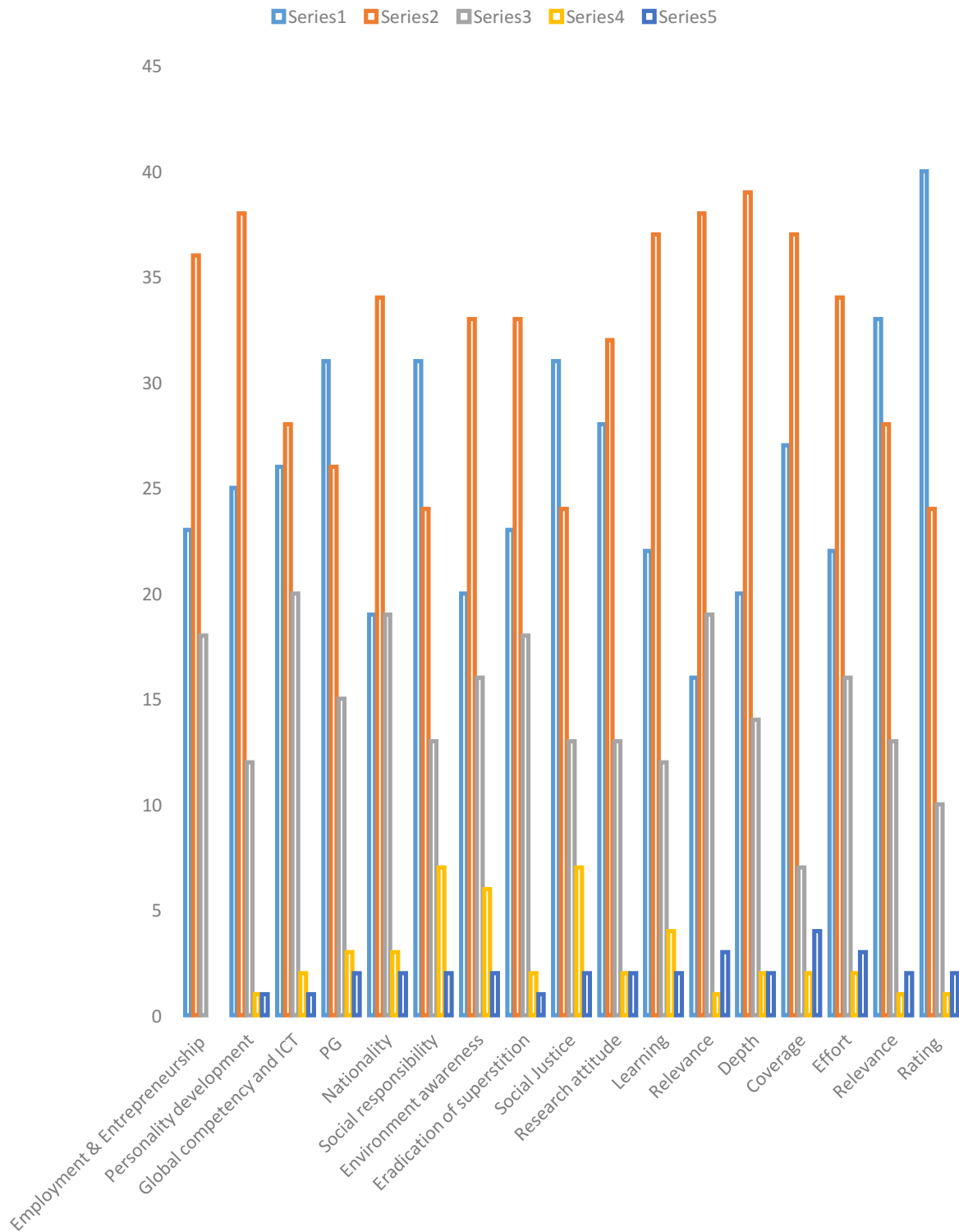


CHART 1 STUDENTS FEEDBACK

STUDENTS PROGRAMME FEEDBACK

Feedback is regular practice in college. The feed is based on quantitative analysis of satisfaction of the curriculum containing theory, practical's, teaching evaluation methods, and related parameters. Students opinion on various objectives are measured in a four points. A random sample of 77 students from all the departments of the college selected. The data collected has been analysed and the results given below.

<i>The syllabus of each course was</i>		Adequate	Inadequate	Challenging	Dull	TOTAL
	<i>Score in %</i>	40%	13%	43%	4%	100%
	<i>n</i>	31	10	33	3	77

TABLE 2 STUDENTS PROGRAMME FEEDBACK ABOUT SYLLABUS OF EACH COURSE

Students registers his/her feedback on syllabus, on an average 40% it shows that they feel adequate about syllabus, 13% opined that the the syllabus is inadequate, 43% opined that the the syllabus is challenging, while 4% opined that the the syllabus is dull.

<i>Background for benefitting from the Couse was</i>	More than Adequate	Adequate	Inadequate	Cannot Say
	31%	56%	6%	6%
	24	43	5	5

TABLE 3 STUDENTS PROGRAMME FEEDBACK ABOUT BACKGROUND FOR BENEFITTING FROM COURSE

Students registers his/her feedback on background for benefitting from the course was, on an average 31% it opined that syllabus was more than adequate, 56% it opined that syllabus was adequate, 6% it opined that syllabus was adequate, 6%opined that they cannot say.

<i>Was the course easy or difficult to understand?</i>	Easy	Manageable	Difficult	Very Difficult
	58%	34%	6%	1%
	45	26	5	1

TABLE 4 STUDENTS PROGRAMME FEEDBACK ABOUT COURSE TOUGHNESS

Students registers his/her feedback on course was easy or difficult to understand, on an average 58% it shows that they feel syllabus was easy, 34% opined that the the syllabus is manageable, 6% opined that the the syllabus was difficult, 1% opined that the the syllabus was very difficult.

ALUMNI FEEDBACK ANALYSIS REPORT

We have taken the feedback from Alumni on design and review of syllabus. The details of feedback are as follow

ANALYSIS OF FEEDBACK RECEIVED FROM ALUMNI

	5	4	3	2	1	Sum	5	4	3	2	1
Usefulness of syllabus in the employment & Entrepreneurship	6	5	0	1	0	12	50%	42%	0%	8%	0%
Role of syllabus in the personality development	7	3	1	1	0	12	58%	25%	8%	8%	0%
Use of syllabus in global competency and ICT	6	4	1	1	0	12	50%	33%	8%	8%	0%
Use of syllabus for admission in PG course and its use while learning P.G. course	5	6	1	0	0	12	42%	50%	8%	0%	0%
Does the syllabus add values to nationality	8	4	0	0	0	12	67%	33%	0%	0%	0%
Does the syllabus add values to Social responsibility?	6	6	0	0	0	12	50%	50%	0%	0%	0%
Does the syllabus add values to Environment awareness?	6	5	1	0	0	12	50%	42%	8%	0%	0%
Does the syllabus add values to Eradication of superstition?	7	5	0	0	0	12	58%	42%	0%	0%	0%
Does the syllabus add values to Social Justice?	6	6	0	0	0	12	50%	50%	0%	0%	0%
Usefulness of syllabus in the skill development & development of research attitude among the student	6	6	0	0	0	12	50%	50%	0%	0%	0%
Learning value (in terms of skills, concepts, knowledge, analytical abilities, or broadening perspectives)	6	5	0	1	0	12	50%	42%	0%	8%	0%
Applicability/relevance to real life situations	6	6	0	0	0	12	50%	50%	0%	0%	0%
Depth of the course content	6	5	1	0	0	12	50%	42%	8%	0%	0%
Extent of coverage of course	5	6	0	1	0	12	42%	50%	0%	8%	0%

Extent of effort required by students	3	9	0	0	0	12	25%	75%	0%	0%	0%
Relevance/learning value of project/ report	8	4	0	0	0	12	67%	33%	0%	0%	0%
Overall rating of Syllabus	9	3	0	0	0	12	75%	25%	0%	0%	0%

TABLE 5 ALUMNI FEEDBACK

GRAPHICAL PRESENTATION FEEDBACK RECEIVED FROM ALUMNI'S:

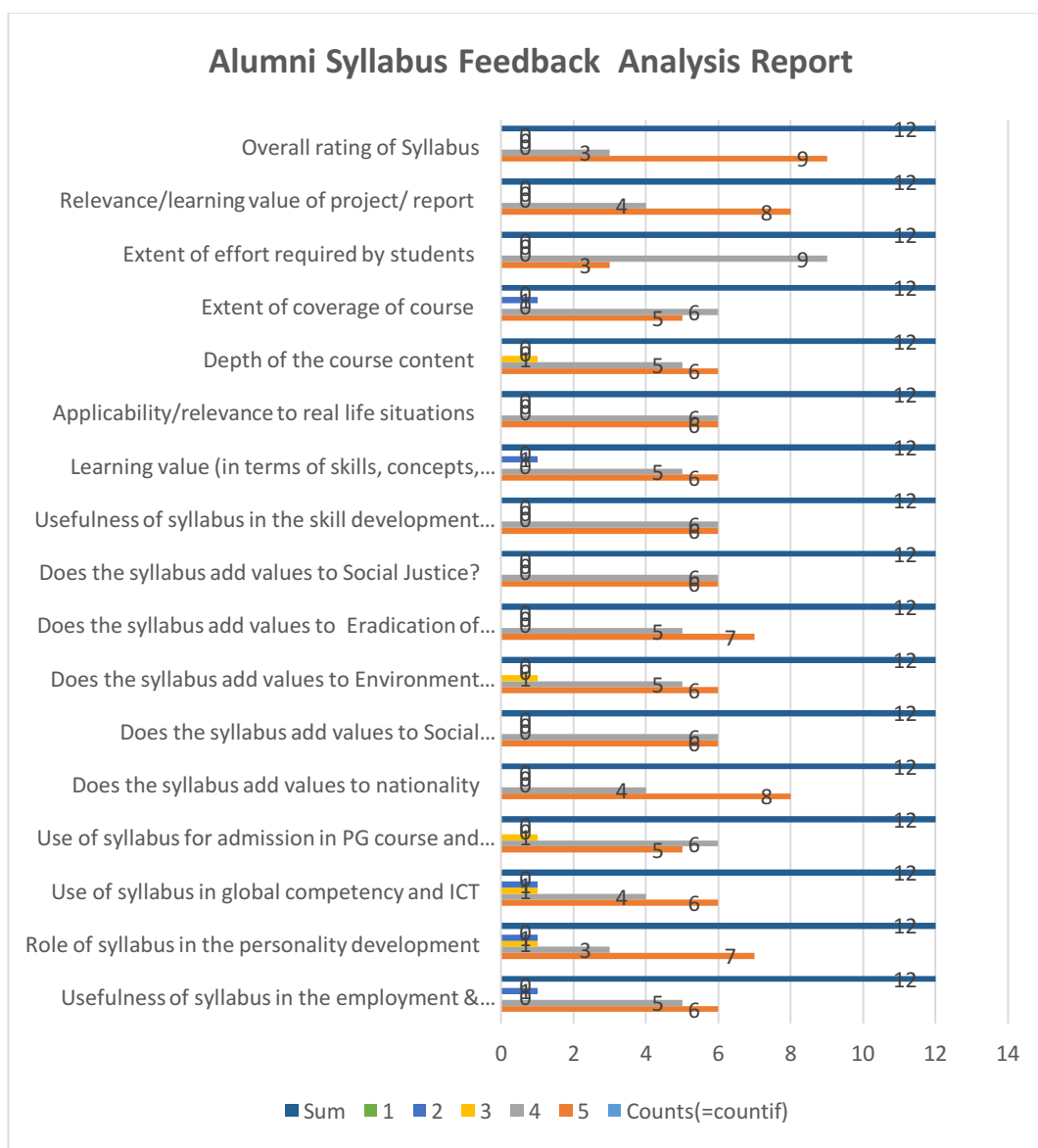


CHART 2 ALUMNI FEEDBACK

TEACHERS FEEDBACK ANALYSIS REPORT

We have taken the feedback from teacher on design and review of syllabus. We have designed a special feedback form on curriculum development. We have received feedback from 29 teachers. The details of feedback are as follow.

ANALYSIS OF FEEDBACK RECEIVED FROM TEACHERS

Curriculum, Teaching, Learning and Evaluation and infrastructure		VERY GOOD	GOOD	SATISFACTORY	UNSATISFACTORY
1	Syllabus is adequate to the course	15	12	2	0
2	Learning values of syllabus (in terms of skills, concepts, analytical abilities, etc...)	12	13	4	0
3	Applicability/Relevance to real life situation	11	12	6	0
4	Employability of the program	10	12	5	2
5	Course content is followed by corresponding reference materials	9	16	4	0
6	Sufficient number of prescribed books are available in the Library	6	15	5	3
7	Infrastructural facilities	11	8	8	2
8	Sufficient time is available to conduct examination for coverage of all units in the syllabus	8	15	4	2
9	Freedom to adopt new techniques of teaching	11	15	2	1

10	Freedom to adopt/adapt new techniques/strategies of testing and assessment of students	9	16	4	0
11	The environment in the college is conducive to teaching and research	12	12	4	1
12	The administration is teacher friendly	14	10	3	2

TABLE 6 TEACHERS FEEDBACK

GRAPHICAL PRESENTATION OF TEACHER'S FEEDBACK

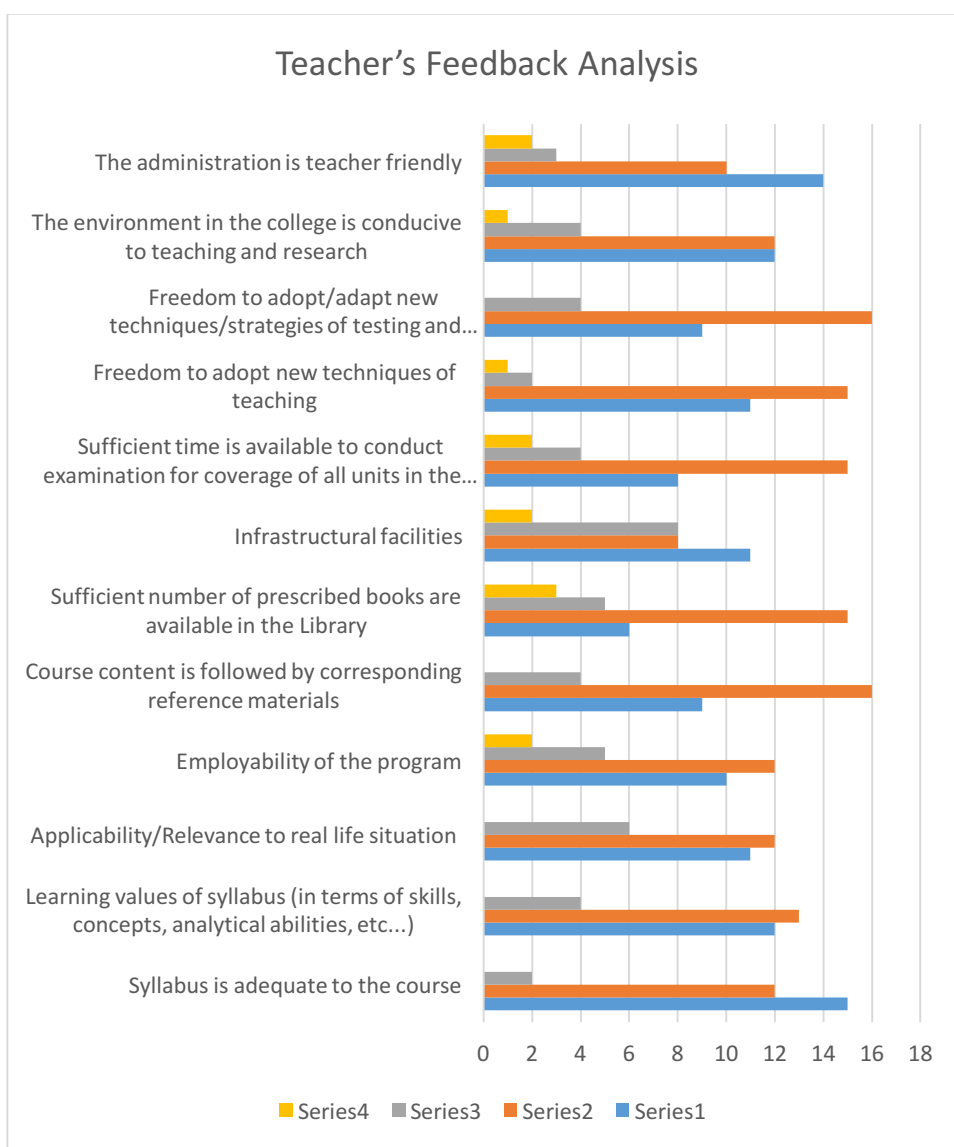


CHART 3 TEACHERS FEEDBACK

INTERPRETATION OF ANALYSIS

Feedback is regular practice in college. The feed is based on quantitative analysis of satisfaction of the syllabus containing theory, practical's, teaching evaluation methods, and related parameters. All teacher's opinion on various objectives are measured in a four point (Very good, Good, Satisfactory, Unsatisfactory)

	Very Good	Good	Satisfactory	Unsatisfactory
n	128	156	51	13
Score in %	36.78%	44.82%	14.65%	3.73%

TABLE 7 TEACHERS FEEDBACK SUMMARY

Each teacher registers his/her feedback, on an average 36.78% it shows that they feel very good with syllabus, 44.82% opined that the the syllabus is Good, 14.65% opined that the the syllabus friendly is satisfactory, while 3.73% opined that the the syllabus is unsatisfactory.

Majority of teachers noticed inclusion of additional topics and practical's in the syllabus.

SUGGESTIONS

1. To increase competency in student, require various courses.
2. Strengthen Library & laboratory facilities.

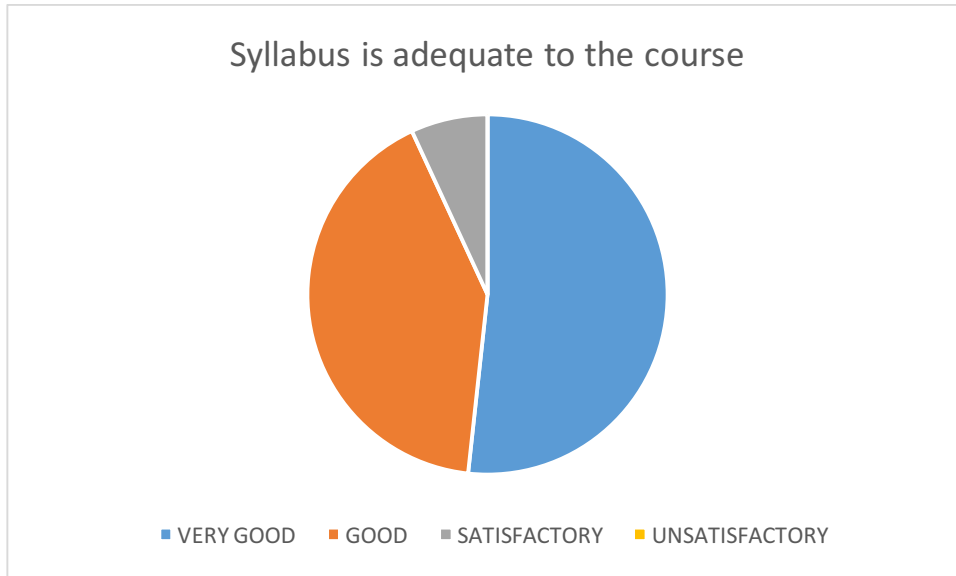


CHART 4 TEACHERS FEEDBACK ABOUT ADEQUACY OF SYLLABUS

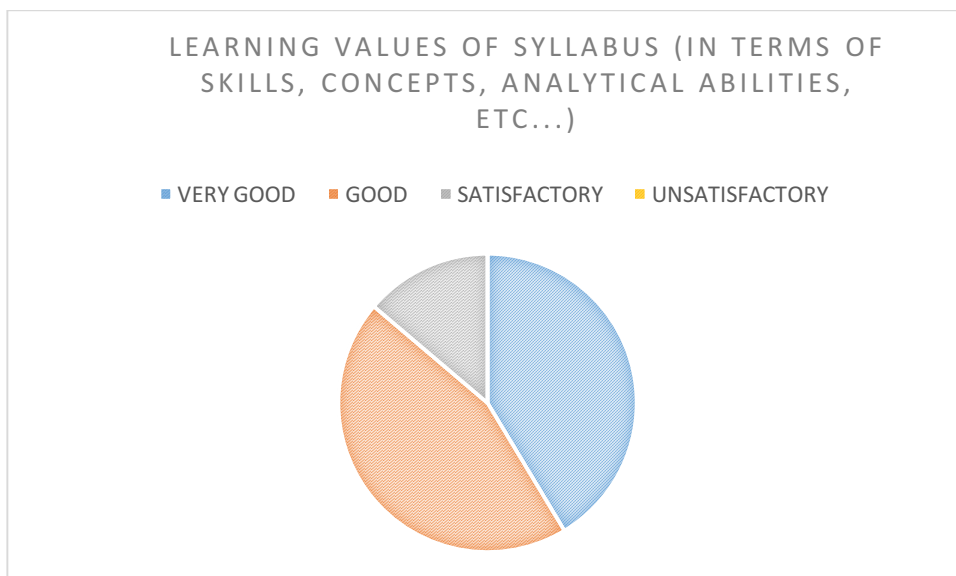


CHART 5 TEACHERS FEEDBACK ABOUT LEARNING VALUES OF SYLLABUS

APPLICABILITY/RELEVANCE TO REAL LIFE SITUATION

■ VERY GOOD ■ GOOD ■ SATISFACTORY ■ UNSATISFACTORY

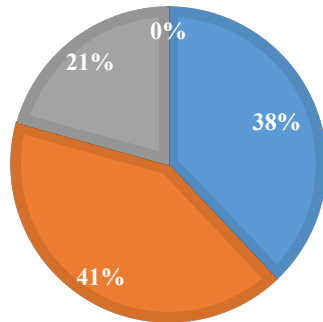


CHART 6 TEACHERS FEEDBACK ABOUT APPLICABILITY OF SYLLABUS

Employability of the program

■ VERY GOOD ■ GOOD ■ SATISFACTORY ■ UNSATISFACTORY

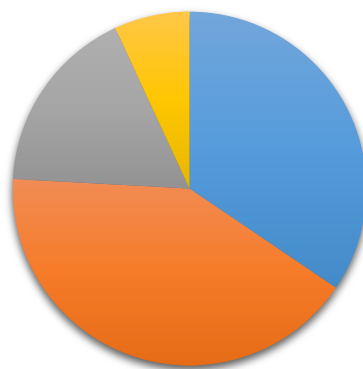


CHART 7 TEACHERS FEEDBACK ABOUT EMPLOYABILITY OF PROGRAMME

PARENTS FEEDBACK ANALYSIS REPORT

We have taken the feedback from parents on design and review of syllabus. The details of feedback are as follow

ANALYSIS OF FEEDBACK RECEIVED FROM PARENTS

	5	4	3	2	1	Sum	5	4	3	2	1
Usefulness of syllabus in the employment & Entrepreneurship	15	15	12	1	1	44	34%	34%	27%	2%	2%
Role of syllabus in the personality development	16	23	5	0	0	44	36%	52%	11%	0%	0%
Use of syllabus in global competency and ICT	18	14	12	0	0	44	41%	32%	27%	0%	0%
Use of syllabus for admission in PG course and its use while learning P.G. course	14	23	5	1	1	44	32%	52%	11%	2%	2%
Does the syllabus add values to nationality	11	20	13	0	0	44	25%	45%	30%	0%	0%
Does the syllabus add values to Social responsibility?	13	23	8	0	0	44	30%	52%	18%	0%	0%
Does the syllabus add values to Environment awareness?	20	14	10	0	0	44	45%	32%	23%	0%	0%
Does the syllabus add values to Eradication of superstition?	19	21	4	0	0	44	43%	48%	9%	0%	0%
Does the syllabus add values to Social Justice?	13	23	8	0	0	44	30%	52%	18%	0%	0%
Usefulness of syllabus in the skill development & development of research attitude among the student	19	14	9	1	1	44	43%	32%	20%	2%	2%
Learning value (in terms of skills, concepts, knowledge,	17	21	5	1	0	44	39%	48%	11%	2%	0%

analytical abilities, or broadening perspectives)												
Applicability/relevance to real life situations	16	21	5	1	1	44	36%	48%	11%	2%	2%	
Depth of the course content	13	18	10	1	2	44	30%	41%	23%	2%	5%	
Extent of coverage of course	16	20	6	1	1	44	36%	45%	14%	2%	2%	
Extent of effort required by students	19	13	8	1	3	44	43%	30%	18%	2%	7%	
Relevance/learning value of project/ report	14	15	11	2	2	44	32%	34%	25%	5%	5%	
Overall rating of Syllabus	17	15	9	2	1	44	39%	34%	20%	5%	2%	

TABLE 8 PARENTS FEEDBACK

SUGGESTIONS

1. Basic concept adds in syllabus
2. Syllabus based on skill
3. Use ICT TECHNIQUES
4. Improve quality of syllabus

GRAPHICAL PRESENTATION OF PARENTS FEEDBACK ON CURRICULUM

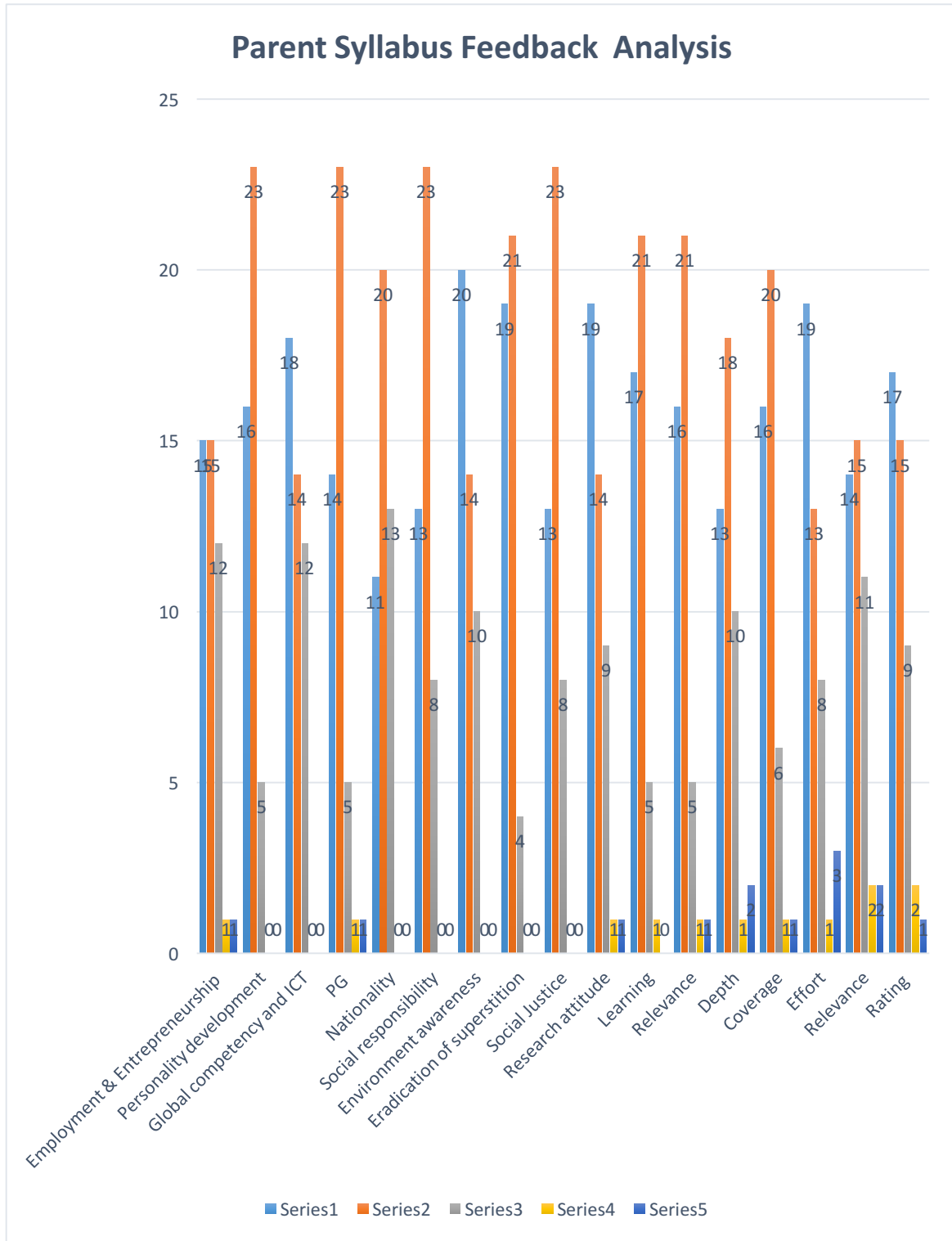


CHART 8 PARENTS FEEDBACK

ACTION TAKEN REPORT ON FEEDBACK

**Aundh Shikshan Mandel Aundh
Raja Shripatrao Bhagwantrao Mahavidyalaya, Aundh**



Action Taken Report on Feedback

Feedback is regular practice in college. The feedback on curriculum along with other aspects has been a routine practice of Internal Quality Assurance Cell (IQAC). The feedback of stakeholders being vital component of institute is of utmost important. A questionnaires was prepared and circulated among the stakeholders to know their views and opinion regarding curriculum. The feed is based on quantitative analysis of satisfaction of the curriculum containing theory, practical's, teaching evaluation methods, and related parameters.

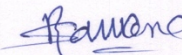
Feedback on syllabus is taken manually from stakeholders. It is analyzed, the feedback analysis report along with feedback forms is submitted to IQAC. This report presents the details of the feedback, its analysis and action taken on the same.

Findings:

1. The stakeholder's students, parents, teachers, and alumni's are satisfied with current curriculum with minor suggestions.
2. The Curricular and co-curricular activities are excellent.
3. Students suggest some short term course.
4. Parents suggest to add basic concept, skill based syllabus, improve quality of syllabus, and use of ICT techniques.
5. Teachers suggest to increase competency in student, require various courses and strengthen library & laboratory facilities.

Action Taken:

According to suggestion given by the stakeholders through the feedback the institution has endeavoured to fulfil the suggestions. The institution will send proposal for strengthen library & laboratory facilities to Aundh Shikshan Mandel, Aundh. The institution will start skill based more course.


PRINCIPAL

Raja Shripatrao Bhagwantrao Mahavidyalaya, Aundh.
Raja Shripatrao Bhagwantrao Mahavidyalaya, Aundh.